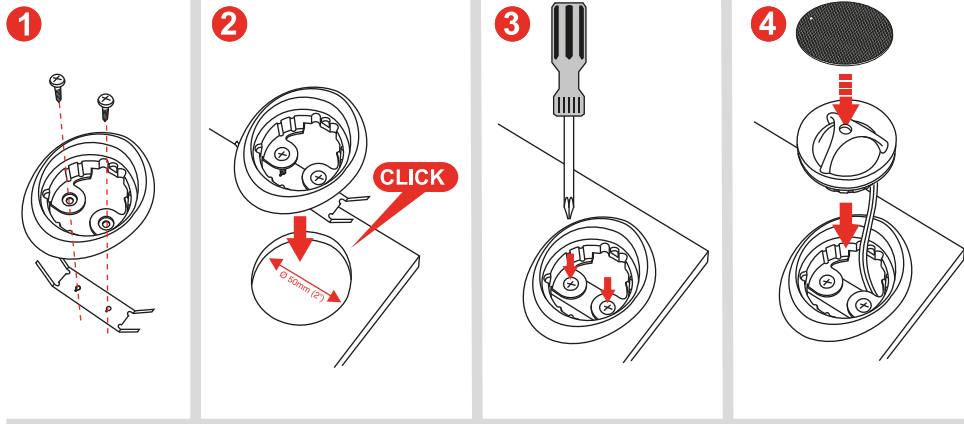
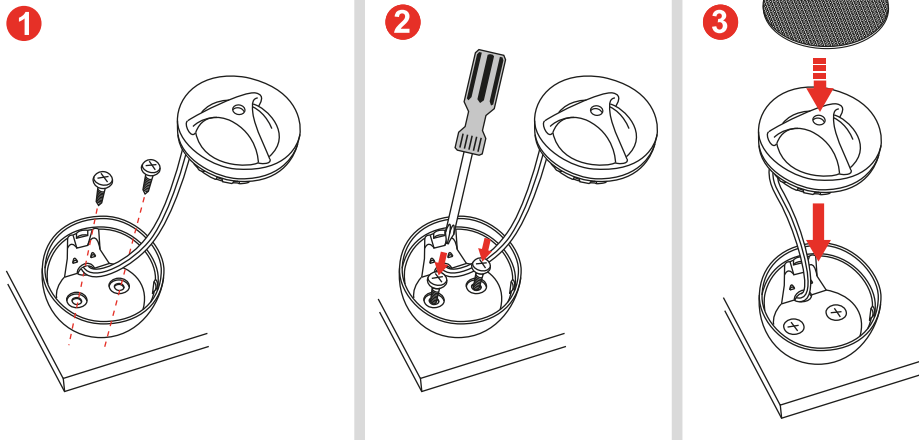


Flush mounting for 50 mm (1.96") cutout



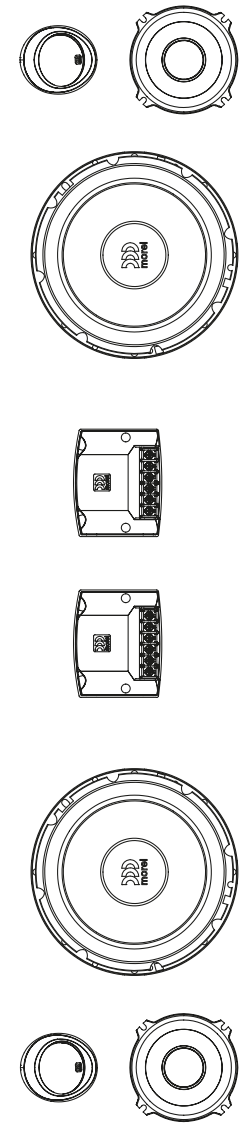
Surface mounting option 2



Specifications

Maximo Ultra 603

| | |
|-------------------------------|---|
| Nominal Impedance | 4 ohm |
| Power Handling | 100W |
| Max. Transient Power Handling | 180W |
| Sensitivity (2.83V/1M) | 90.5dB |
| Frequency Response | 50-20,000 Hz |
| Voice Coil Diameter | Woofer: 25mm(1") Tweeter: 25mm(1") Mld: 20mm(0.8") |
| Voice Coil Wire | Copper |
| Magnet System | Woofer: High grade ferrite magnet Tweeter: Neodymium |
| Mounting Depth | 63mm (2.5") |

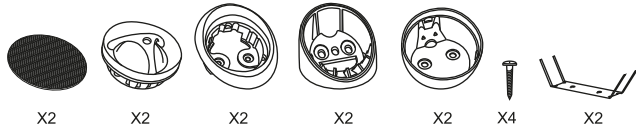


maximo ultra MklII
Car Audio Component Speaker System

603 6.5" 3 Way

content

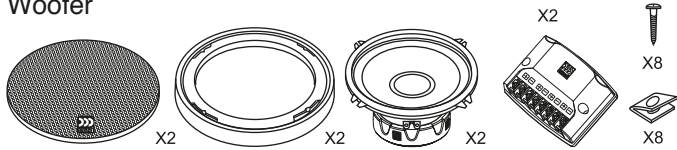
Tweeter



Mid range

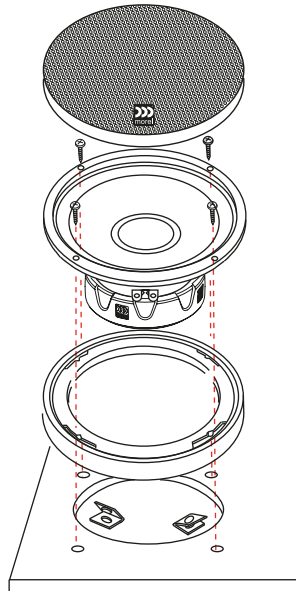


Woofers

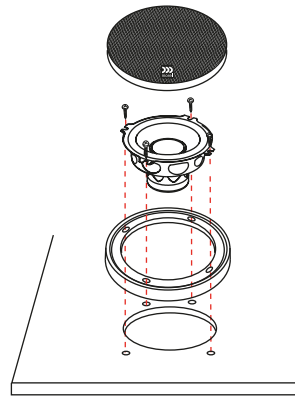


Woofer and Mid mounting

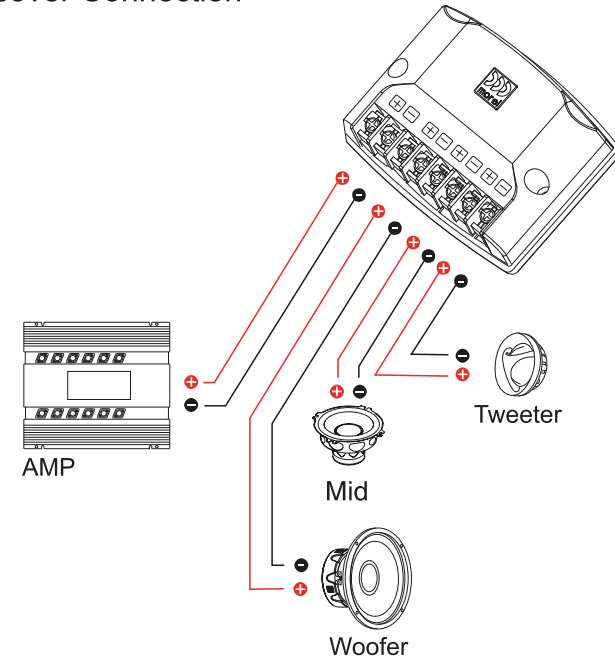
6.5"



2.5"



Crossover Connection



Surface mounting

